

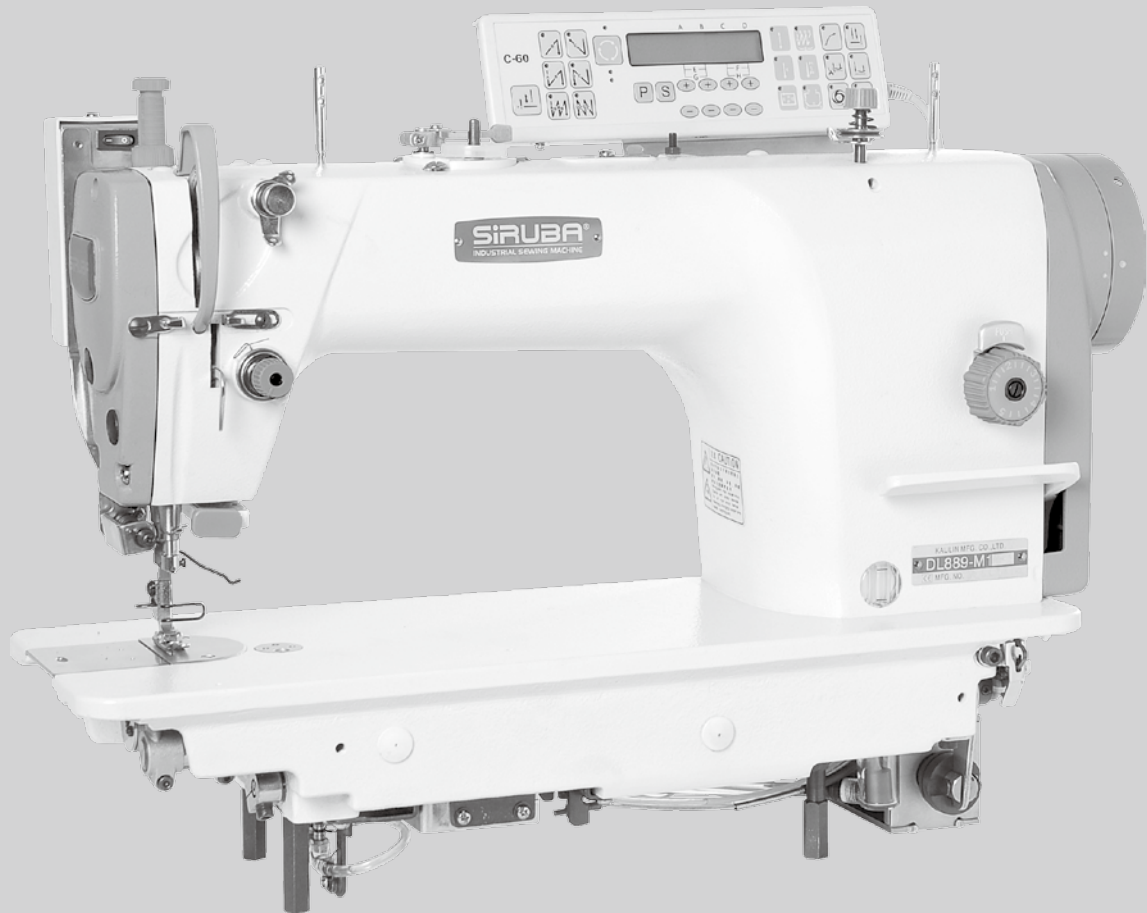
SIRUBA®

銀箭牌工業用縫紉機

INDUSTRIAL SEWING MACHINE

DL889








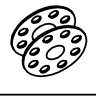

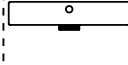
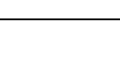
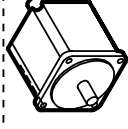
零件圖 PARTS LIST



CE

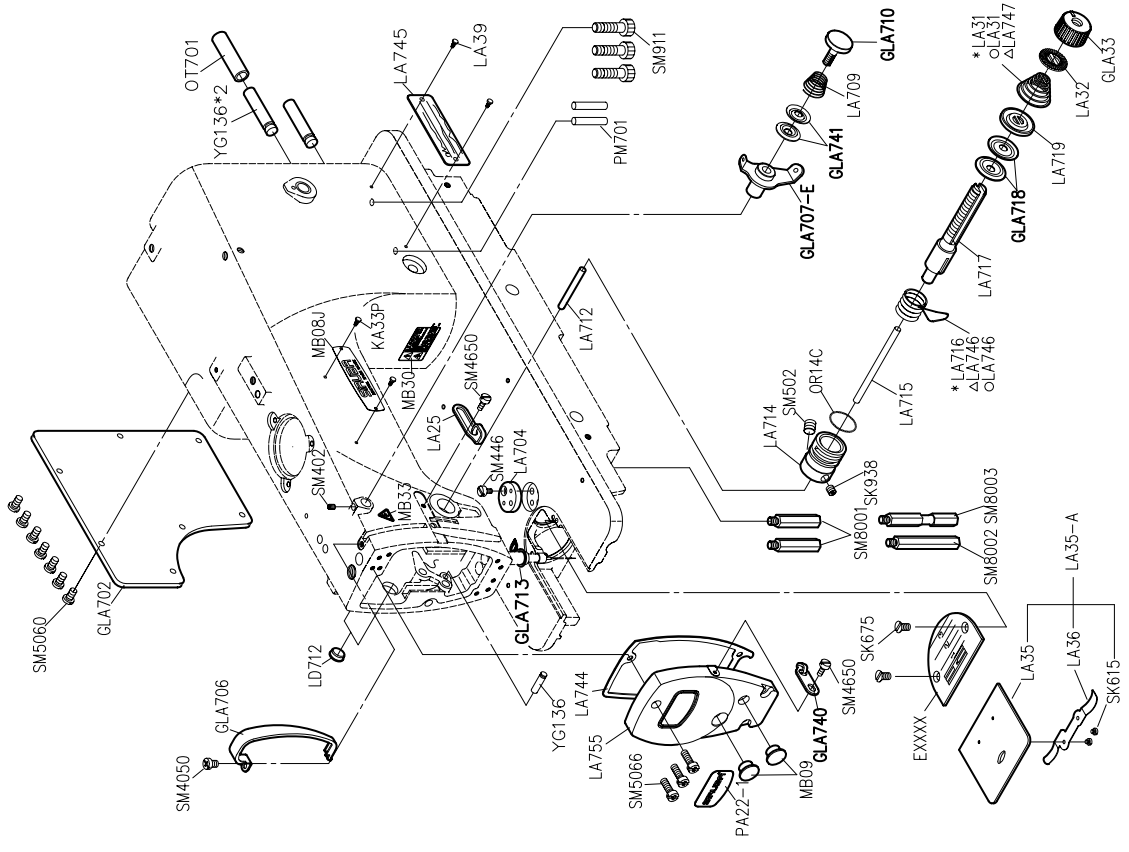
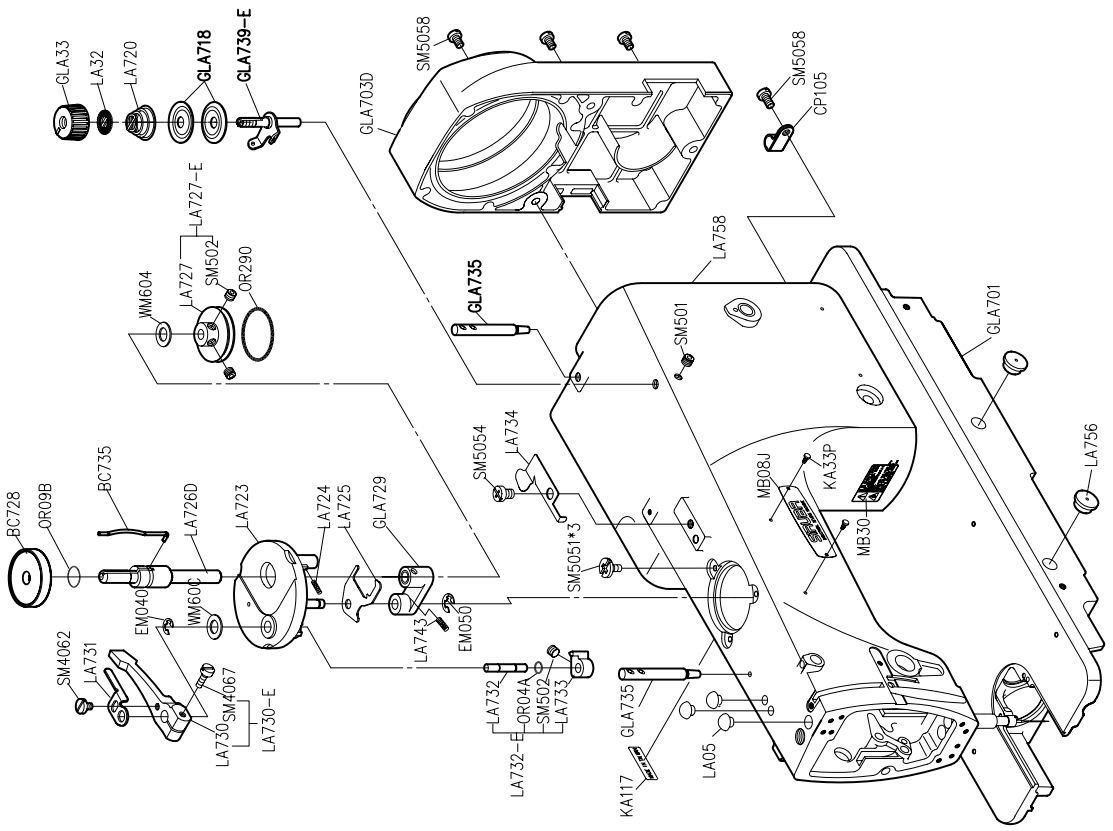


高林股份有限公司
KAULIN MFG. CO., LTD.

MODEL 機 型 (微油)	 SUB-CLASS 規 格	 OPERATING PANEL 操作盒	 NEEDLE PLATE 針 板	 FEED DOG 送 具	 PRESSER FOOT 押 具	 HOOK ASM 梭 頭	 BOBBIN CASE ASM 梭 殼	 BOBBIN 梭 子	 NEEDLE 針 號	 HAND WHEEL 皮 帶 輪	 SHAFT 心 軸	 MOTOR 馬 達
DL889-M1A-0	中厚布	田 C60M	E806D	D806D	P701	G121	G202	G303	DB*1#11	LH735D-A	LH749	田T502HE
DL889-M1A-1			E806	D806	P701							
DL889-M1A-2			E807D	D807D	P711							
DL889-M1A-3			E807	D807	P711							
DL889-H1A-0	厚布料		E807D	D807D	P711	G122B	G202	G303	DP*5#19	LH735D-A	LH749	田T502HE
DL889-H1A-1			E807	D807	P711							
DL889-H1A-2												
DL889-H1A-3												

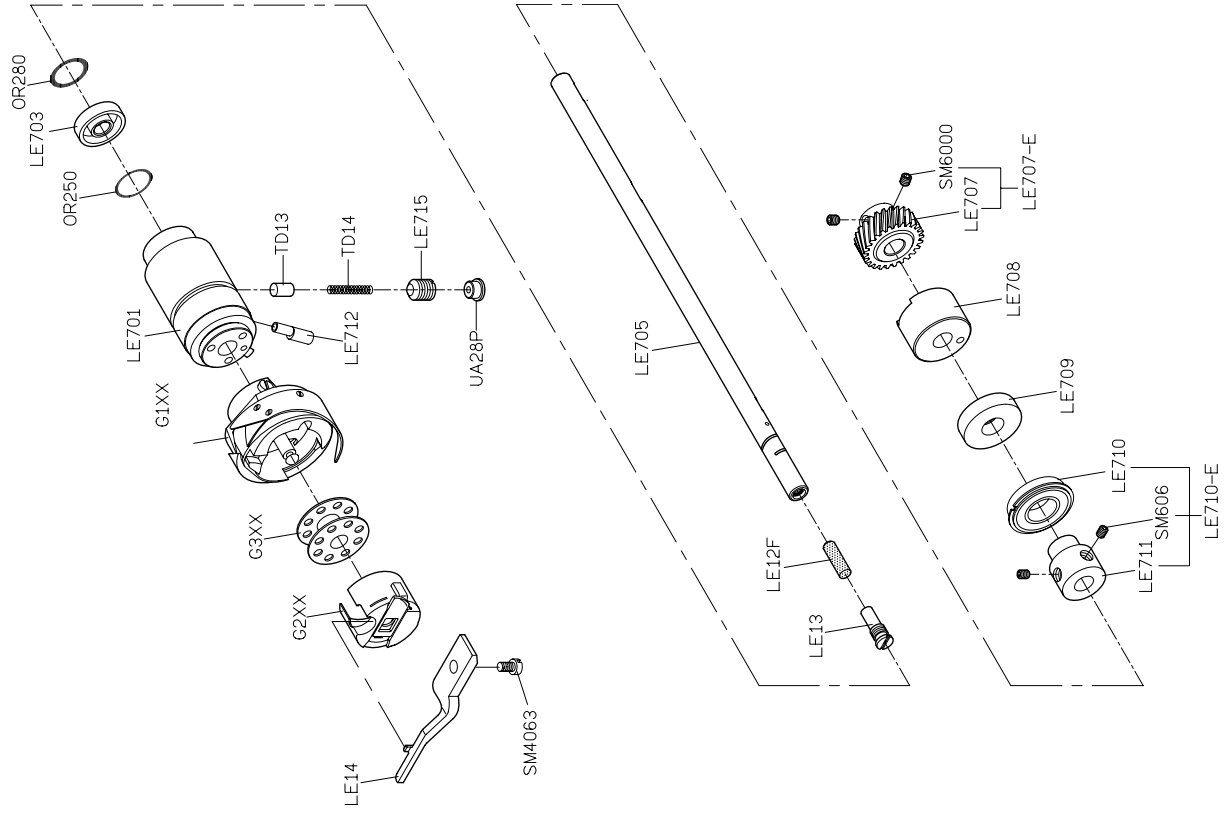
規格件表 CONVERSION CHART

MODEL	OPERATING PANEL	NEEDLE PLATE	FEED DOG	PRESSER FOOT	HOOK ASM	BOBBIN CASE ASM	BOBBIN	NEEDLE	HAND WHEEL	SHAFT	MOTOR
機型 (針棒無袖式)	操作盒	針板	送具	押具	梭頭	梭殼	梭子	針號	皮帶輪	心軸	馬達
DL889-L2A-0	H C60M	E810D	D805D	P701	G121	G202	G303	NS#9	LH735D-A	LH712	ET502HE
DL889-L2A-1		E810	D805	P701							
DL889-L2A-2		E806D	D806D	P701							
DL889-L2A-3		E806	D806	P701							
DL889-L2-0	中厚布										
DL889-L2-1											
DL889-L2-2											
DL889-L2-3											
DL889-M2A-0	中厚布										
DL889-M2A-1											
DL889-M2A-2											
DL889-M2A-3											
DL889-M2-0	中厚布										
DL889-M2-1											
DL889-M2-2											
DL889-M2-3											

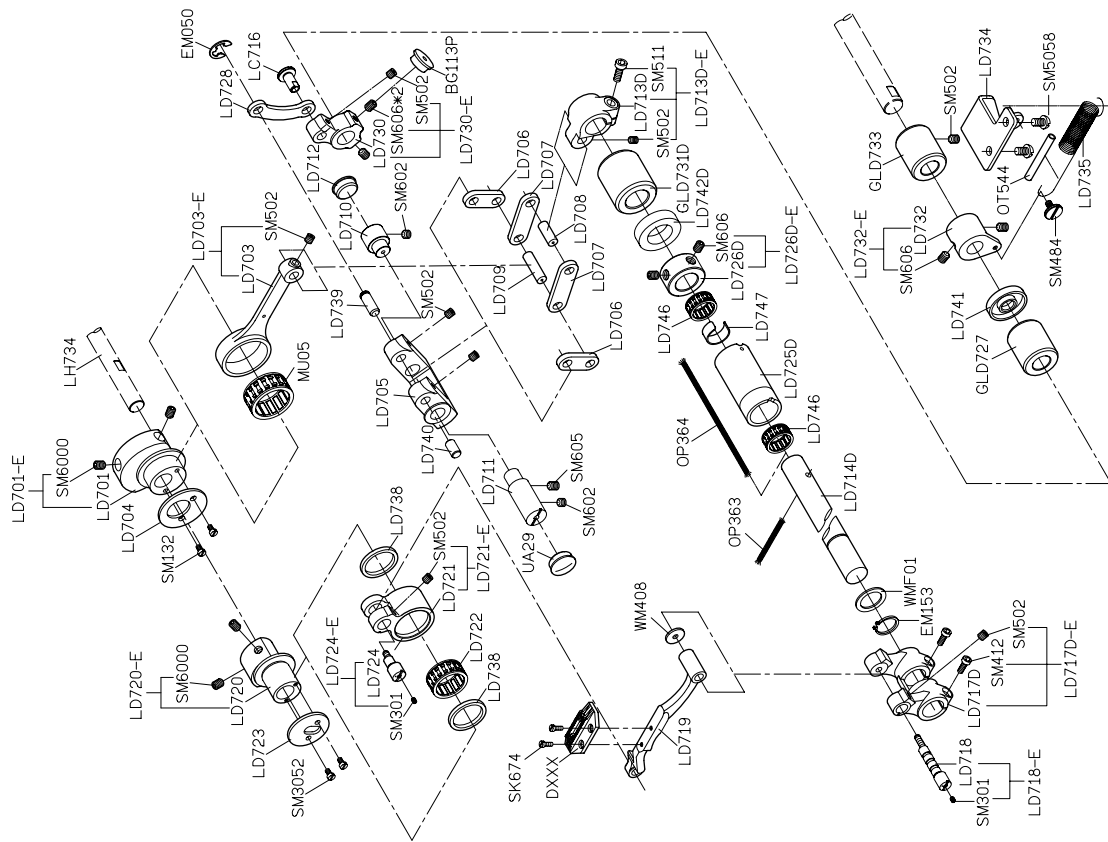


PARTS LIST FOR LA GROUP

PARTS LIST FOR LA GROUP



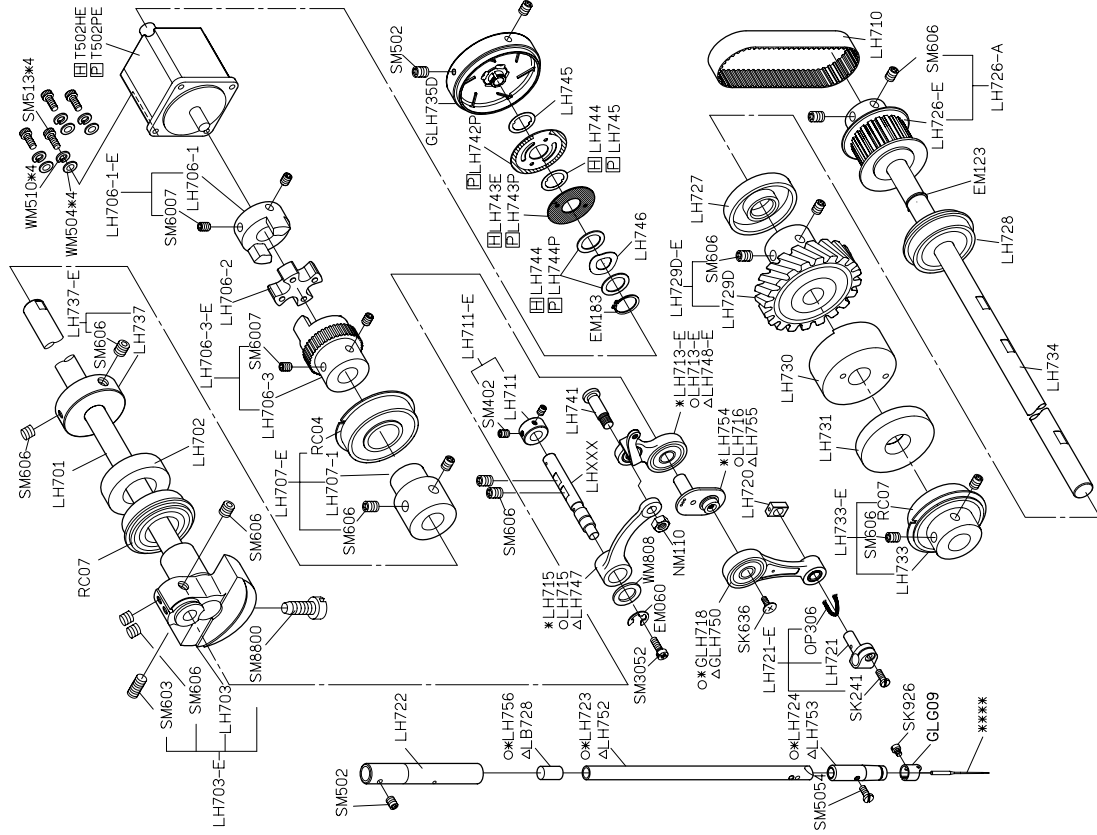
PARTS LIST FOR LE GROUP



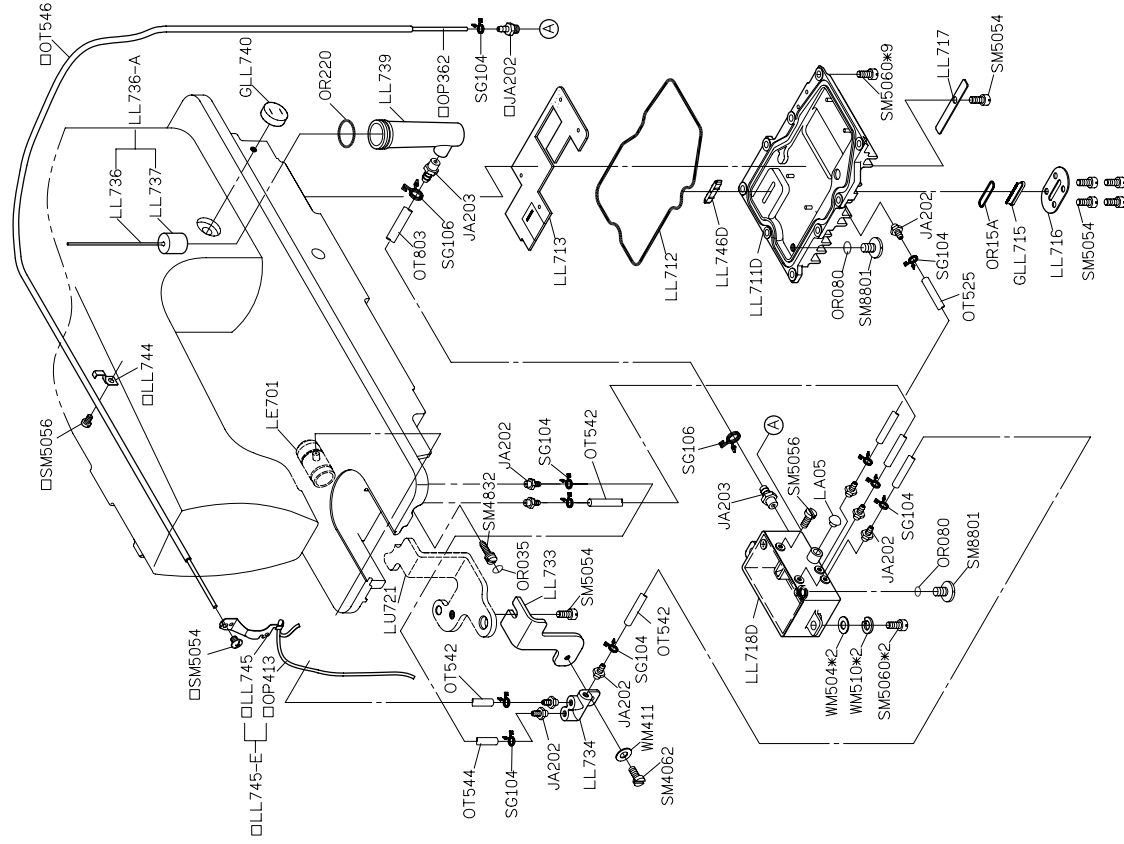
PARTS LIST FOR LD GROUP

PARTS LIST FOR LH GROUP

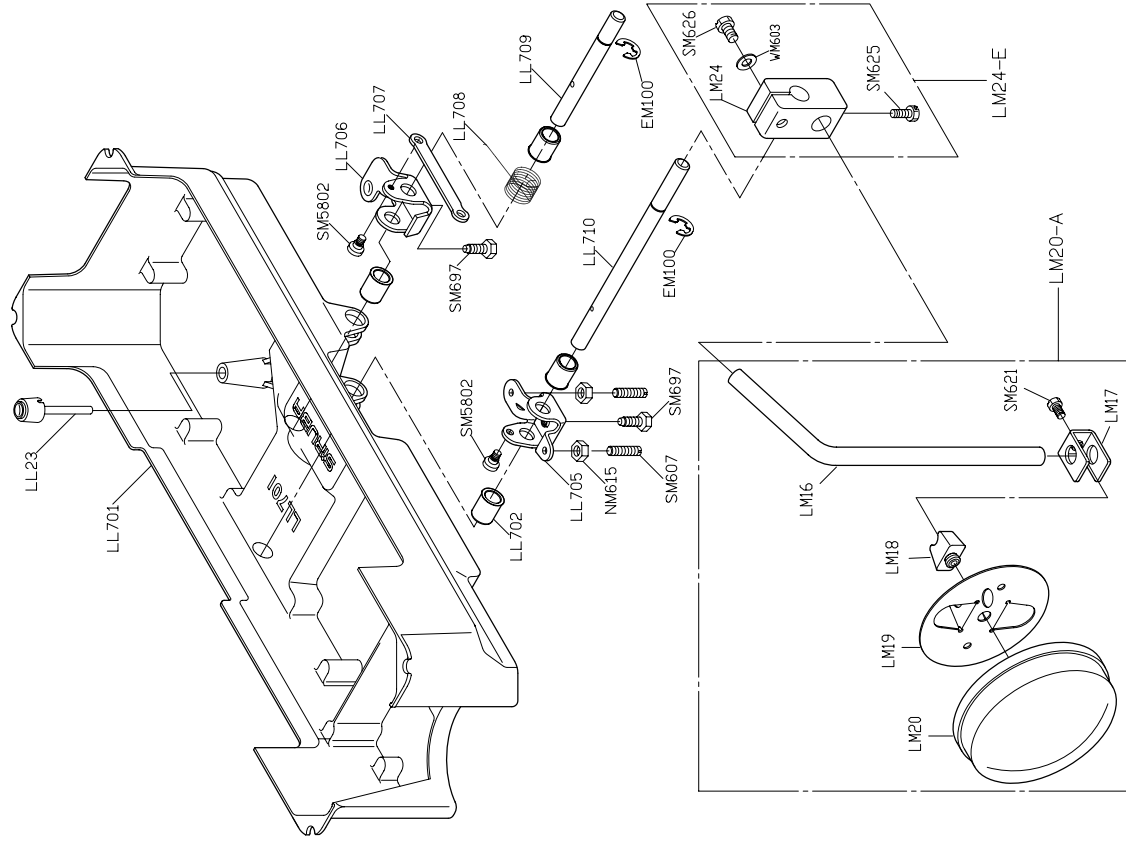
PARTS LIST FOR LL GROUP



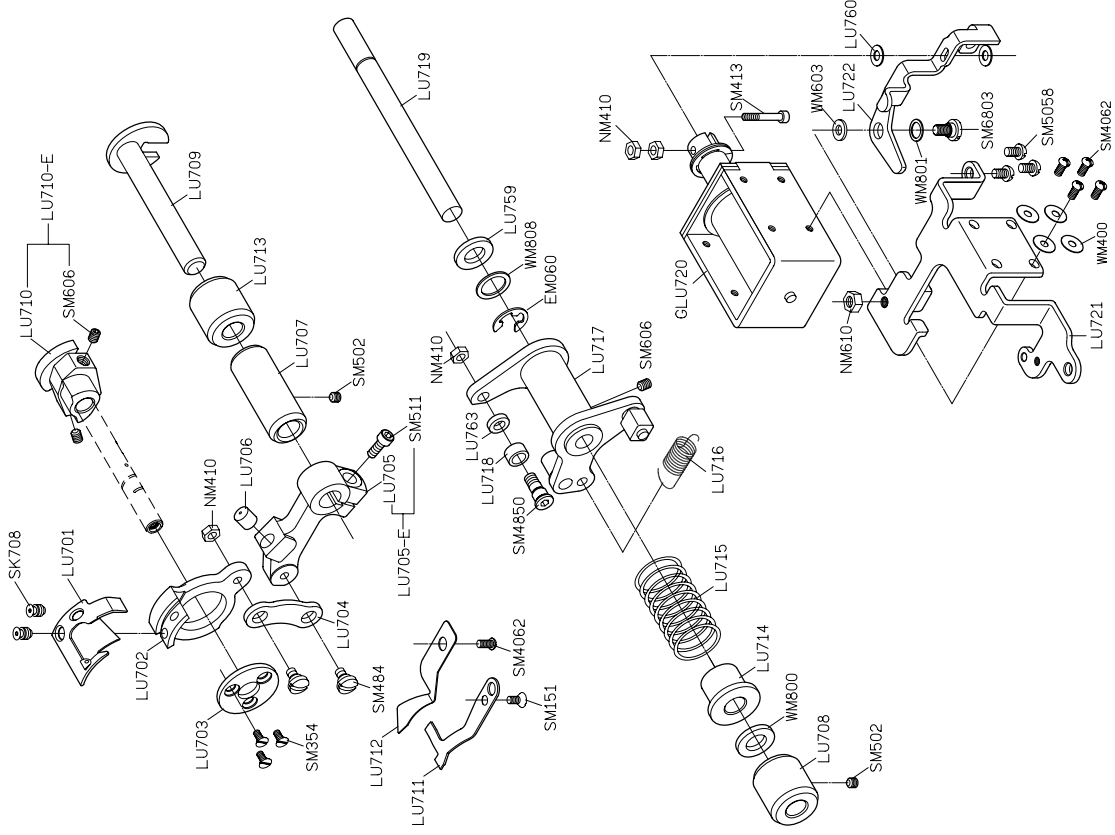
FOR DL889 * 鋼料 (DL889-LX-X) △ 材料 (DL889-HXX-X) □ FOR 上機殼蓋
 ○ 中厚 (DL889-HXX-X) □ FOR 下機殼蓋



FOR DL889 □ (DL889-XIX-X)

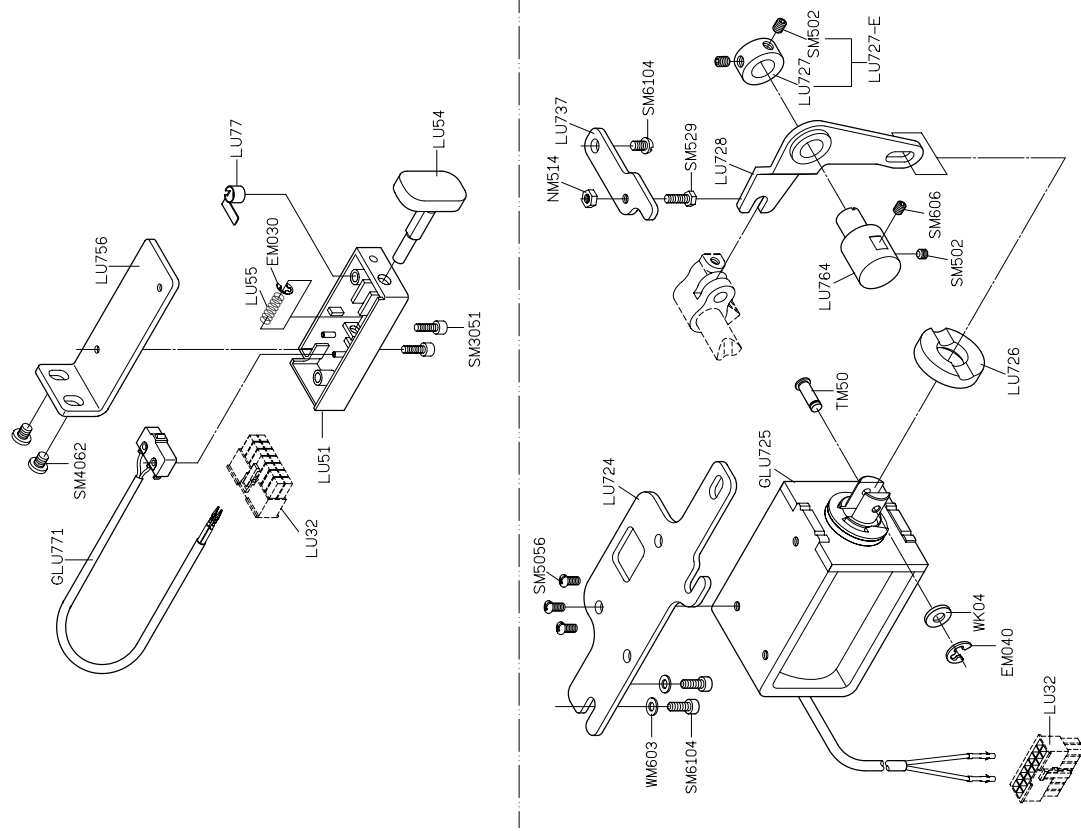


PARTS LIST FOR LL GROUP

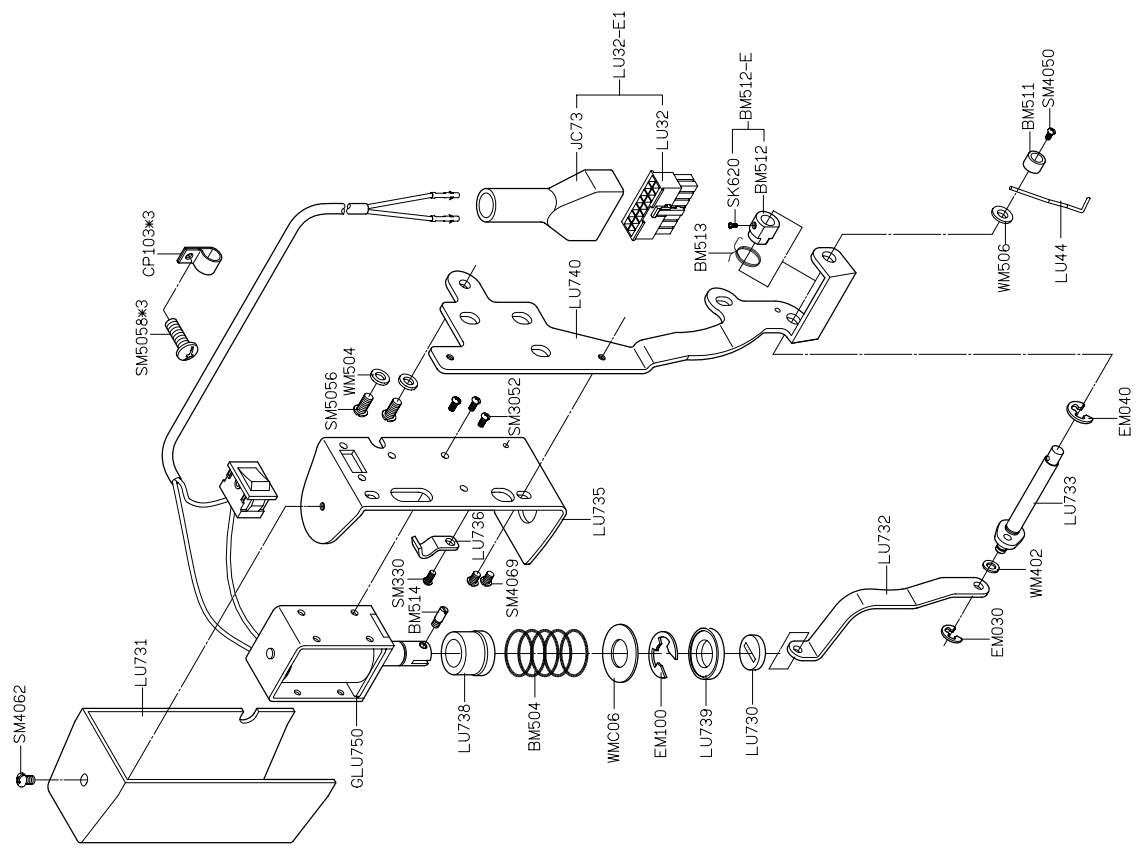


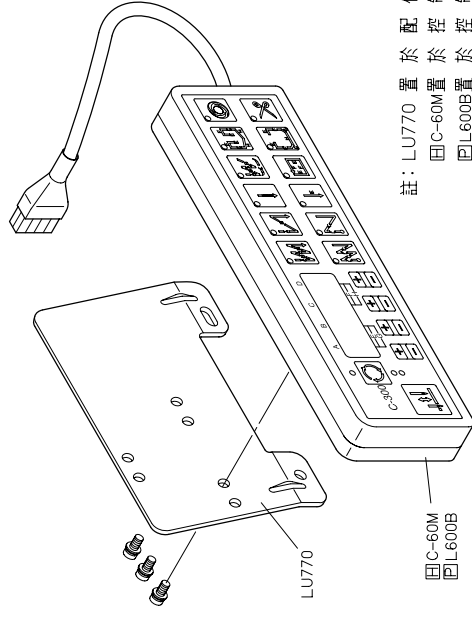
PARTS LIST FOR LU GROUP

PARTS LIST FOR LU GROUP

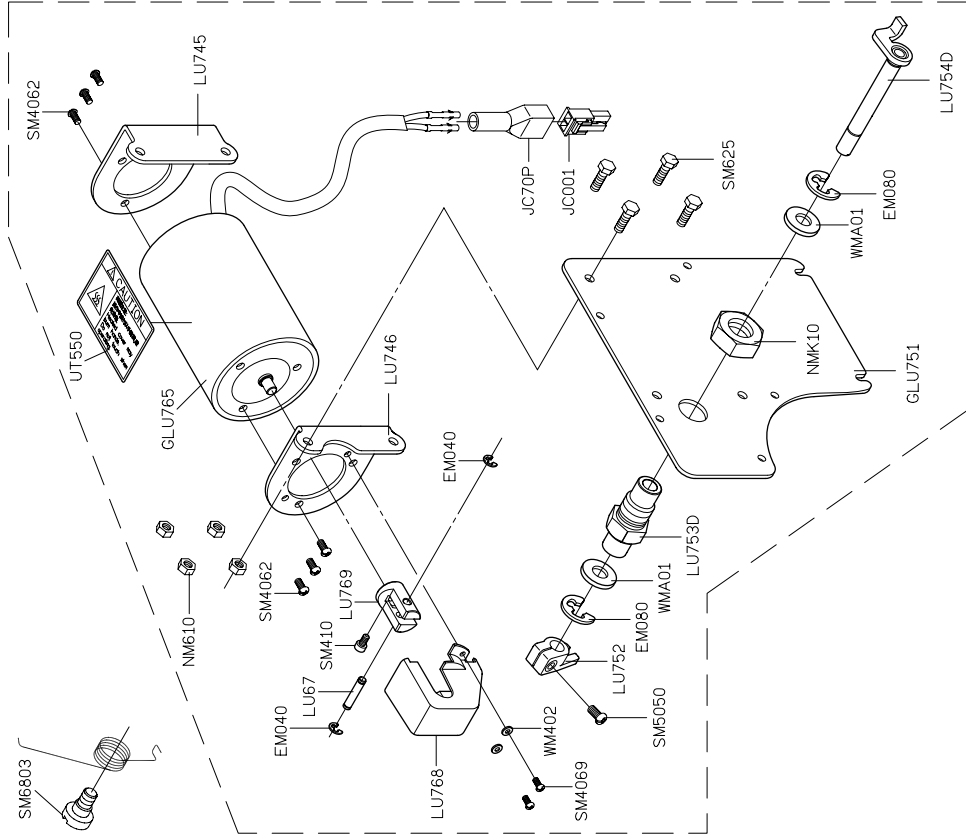
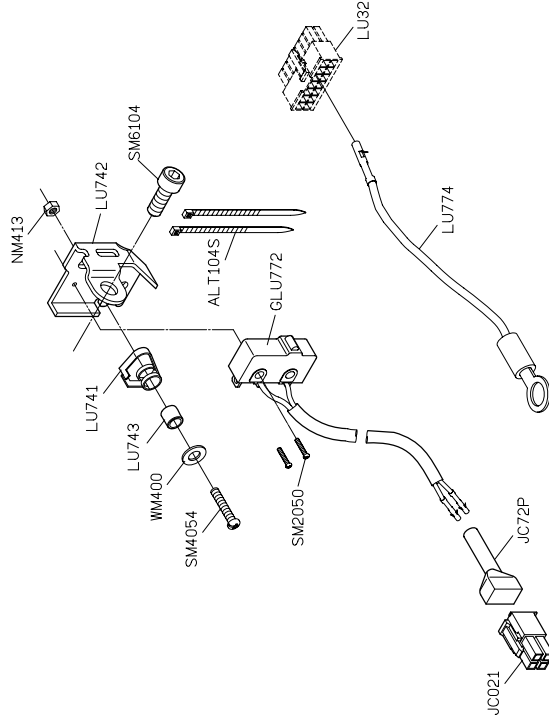


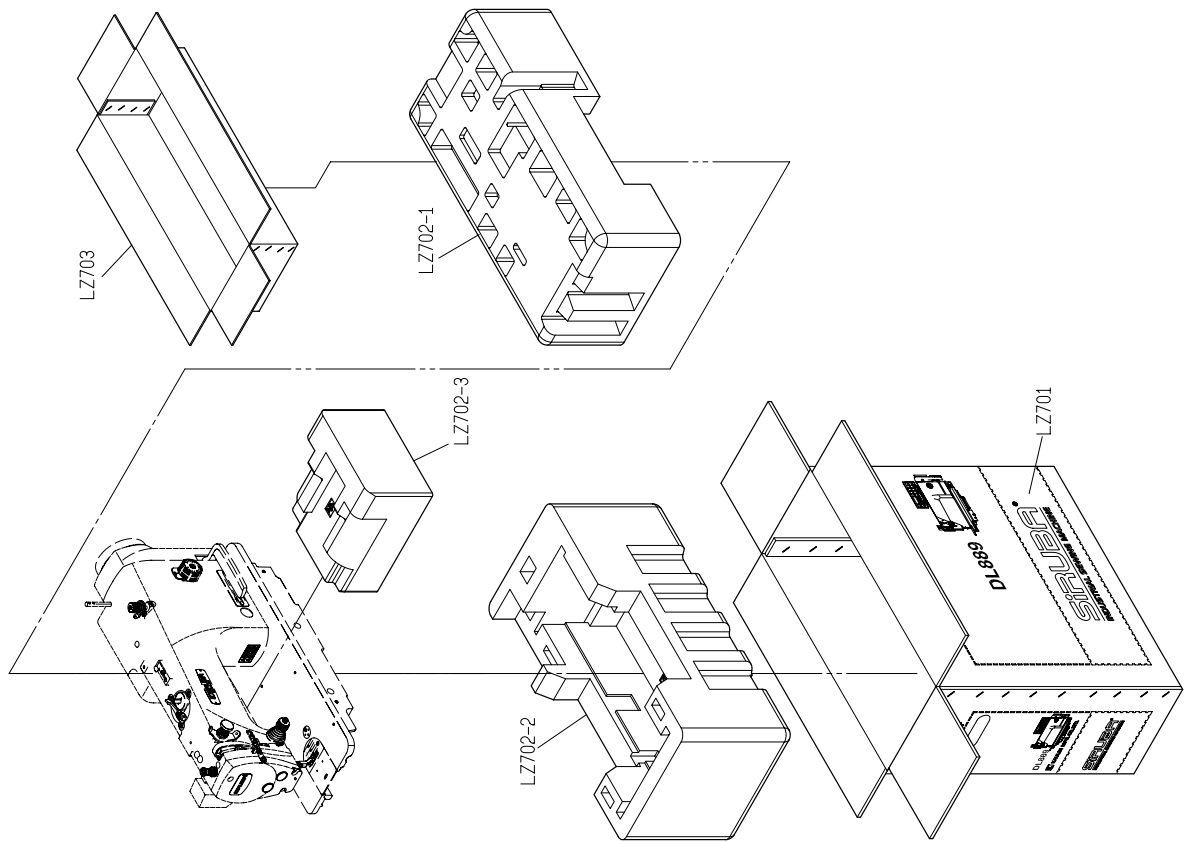
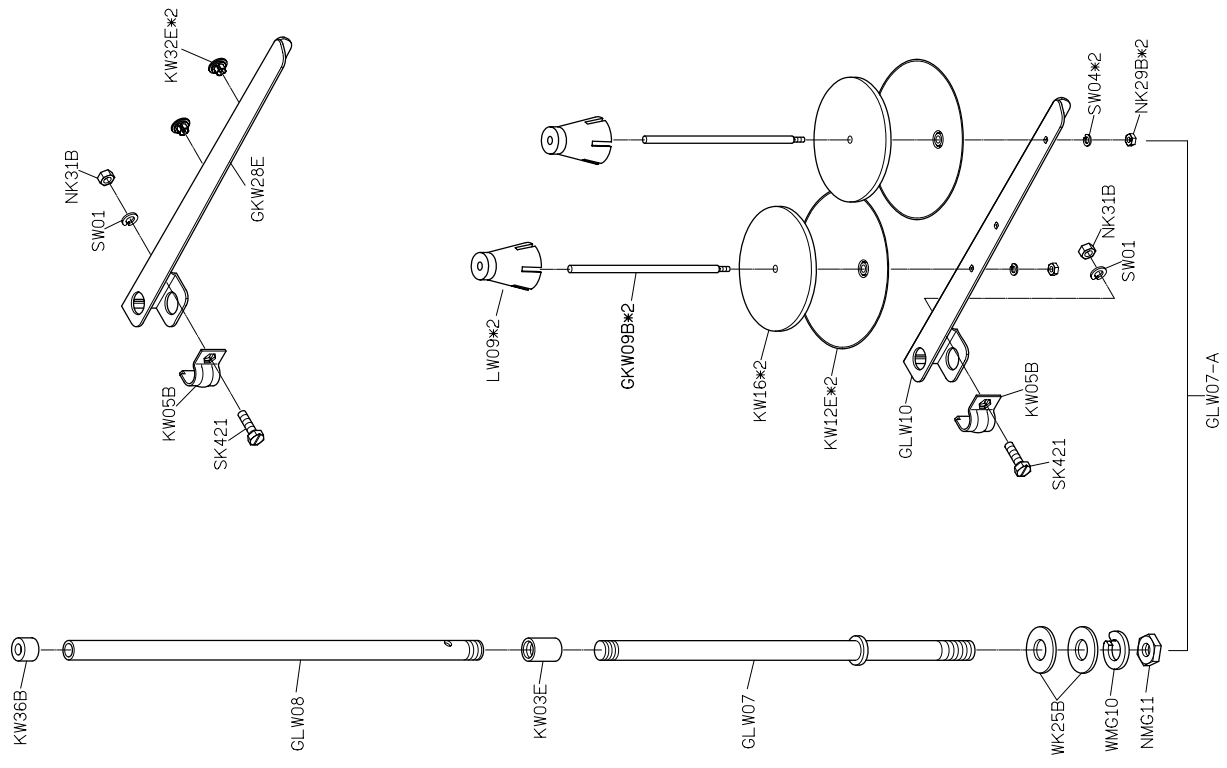
PARTS LIST FOR LU GROUP





註：LU770 置於控制箱內
 田C-60M 置於控制箱內
 田L600B 置於控制箱內





PARTS LIST FOR LZ GROUP

PARTS LIST FOR THREAD STAND GROUP



DL889

高林股份有限公司 KAULIN MFG. CO., LTD.